

Saw Arbor Electric Motor

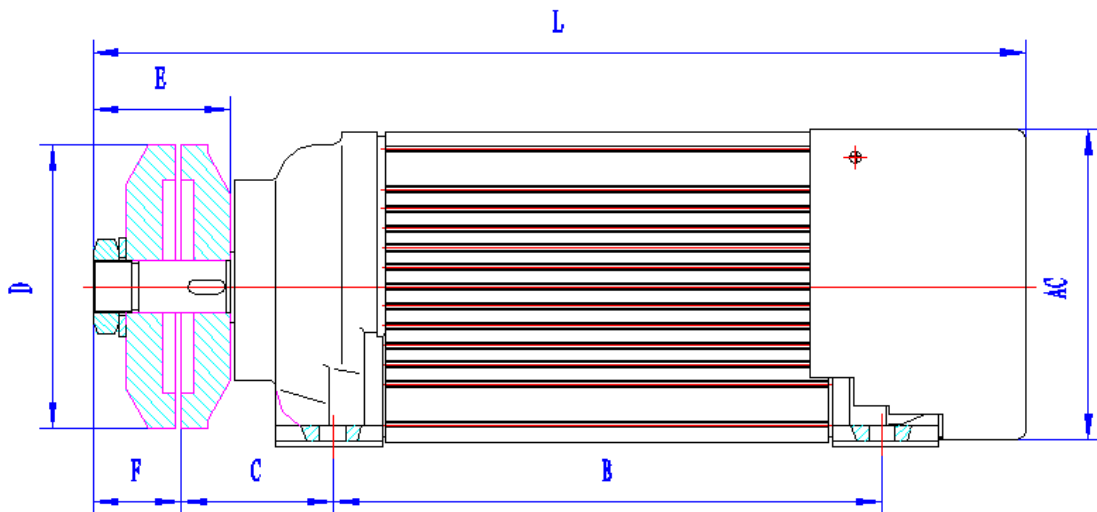


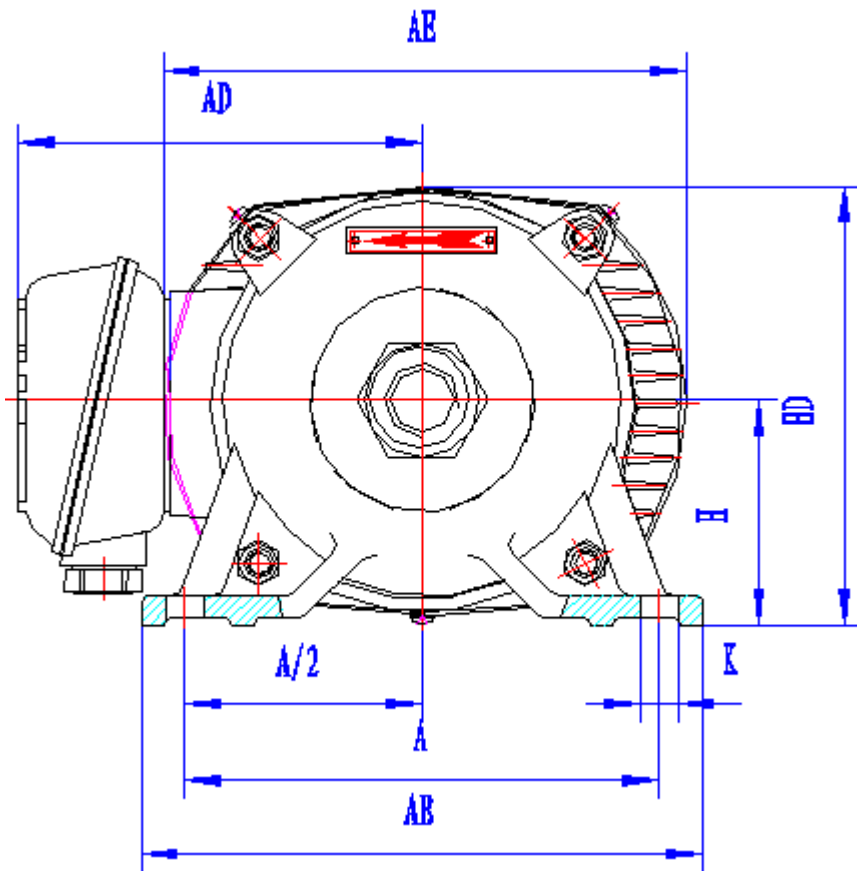
- CAST IRON FRAME.
- IP54.
- B CLASS INSULATION.
- DOUBLE SPEED AVAILABLE, 4 POLE, 6 POLE AVAILABLE.
- DOUBLE OUTPUT SHAFT AVAILABLE.
- 575V OR 600V, 220V/380V, 230V/460V ON REQUEST.
- 60HZ, 50HZ.
- LOW NOISE AND VIBRATION WITH HIGH QUALITY
- BALL BEARINGS.
- ISO9001 CERTIFIED.

Saw arbor motor

Dimensions:

TYPE	Mounting Size									Outline Size					
	A	A/2	B	C	D	E	F	H	K	AB	AC	AD	AE	HD	L
YCM-80S	190	95	260	80	120	92	64	80	15	225	148	148	185	154	470
YCM-80M			310												520
YCM-80M1			310												520
YCM-90S	190	95	310	80	160	92	64	90	15	225	174	170	215	177	535
YCM90M			345												570
YCM-90L			400												625





Performance data:

Model	Pwr HP	Rated Voltage V	Connection	Rated Current A	Rated Frequency Hz	Rated Speed r/min	Eff %	Power factor	Breakdown torque	Breakdown torque	Max torque Rated torque
									Rated torque	Tate current	
Synchronous speed:3600r/min											
YCM-80S-2	3.0	230/460	(2Y+Y)	8.0/4.0	60	3450	82.0	0.86	2.2	7.0	2.2
YCM-80M-2	4.0	230/460	(2Y+Y)	10.6/5.3	60	3450	82.0	0.87	2.2	7.0	2.2
YCM-80M1-2	5.0	230/460	(2Y+Y)	13.0/6.5	60	3450	82.0	0.87	2.2	7.0	2.2
YCM-90S-2	5.5	230/460	(2Y+Y)	13.7/6.9	60	3450	85.5	0.87	2.2	7.0	2.2
YCM-90M-2	7.5	230/460	(2Y+Y)	18.4/9.2	60	3450	85.5	0.88	2.2	7.0	2.3
YCM-90L-2	10.0	230/460	(2Y+Y)	24.4/12.2	60	3450	86.2	0.88	2.0	7.0	2.3
YCM-80S-2	3.0	575	(Y)	3.2	60	3450	82.0	0.86	2.2	7.0	2.2
YCM-80M-2	4.0	575	(Y)	4.2	60	3450	82.0	0.87	2.2	7.0	2.2
YCM-80M1-2	5.0	575	(Y)	5.3	60	3450	82.0	0.87	2.2	7.0	2.2
YCM-90S-2	5.5	575	(Δ)	5.5	60	3460	85.5	0.87	2.2	7.0	2.2
YCM-90M-2	7.5	575	(Δ)	7.4	60	3460	85.5	0.88	2.2	7.0	2.3
YCM-90L-2	10.0	575	(Δ)	9.8	60	3460	86.2	0.88	2.0	7.0	2.3